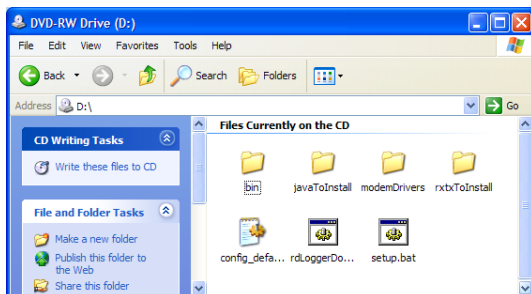


## rdLogger Download Software Instructions

**Revised 2011-05-23**

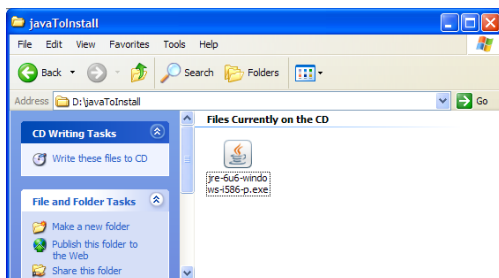
### Loading the CD

- 1) Insert CD labeled “rdLogger” download software and drivers” in computer.
- 2) Open drive by going to “My Computer” and then the appropriate drive.



### Installing Java

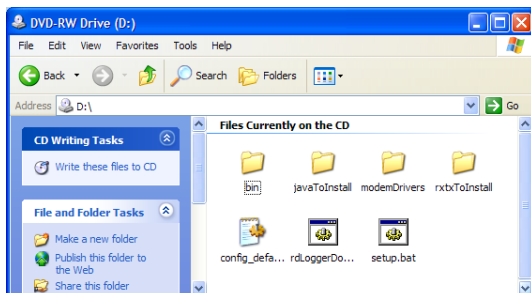
- 1) Open the “javaToInstall” folder.



- 2) Click on the JRE installation file and follow the directions. Use the default settings. After a few minutes, Java will be installed.

### Installing rdLogger download software

- 1) Return to main folder on CD.

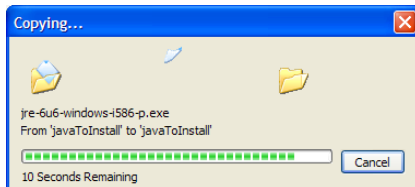


- 2) Select all of the files by going to “Edit->Select All” and then copy the files by going to “Edit->Copy”.

3) Create a new folder somewhere on your hard drive or desktop to put the software. Calling this folder “rdLogger” might be a good idea.



4) Open this folder and go to “Edit->Paste” to copy the files from the CD to it. This may take a minute.



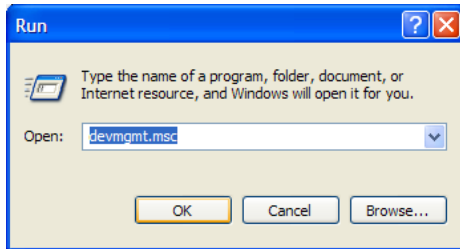
5) After the files are done copying, you can remove the CD from your computer.

## Configuring rdLogger software

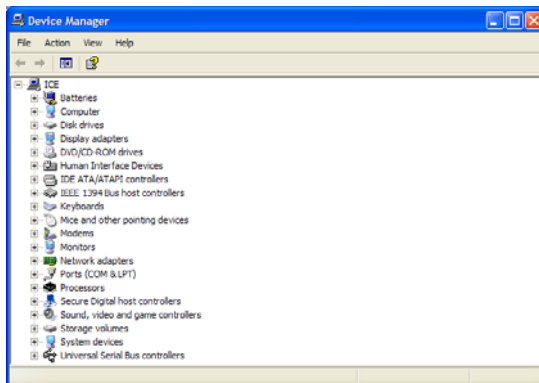
### Determining Modem COM Port

The rdLogger download software must be told the virtual serial port that the wireless modem is connected to. You can determine this using the steps below:

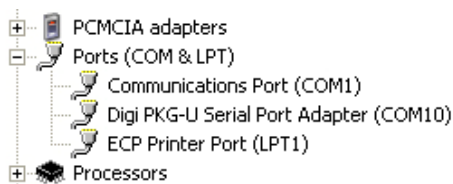
- 1) Go to “Start” and then “Run”. Enter “devmgmt.msc” in the run box and press “OK”.



- 2) Device manager will open and you will get a category list of hardware installed in your computer.



- 3) Expand the menu at “Port (COM & LPT)”.

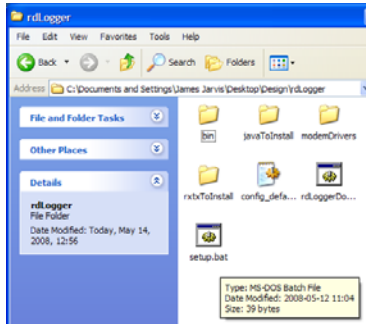


- 4) Note the COM number for the “Digi PKG-U Serial Port Adapter” modem.

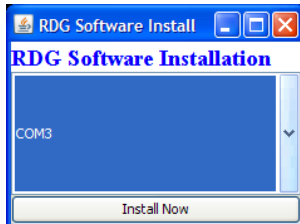
## Configuring rdLogger software

Now that you know the COM port number for the Digi USB modem, you just need to tell the rdLogger software what it is.

1) Run the “setup.bat” file in your rdLogger folder by double clicking on the file.



2) You will be presented with a very simple screen that has a drop down list of serial ports.

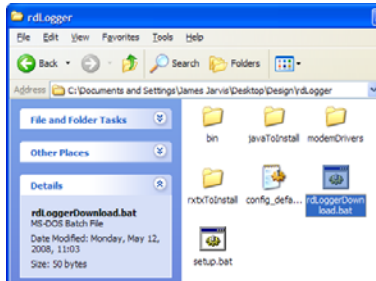


3) Select the serial port number from the list that corresponds to the Maxstream modem’s COM port noted earlier. In our example, this is COM6. Then press “Install Now”. After a brief delay the window will close. The software is now configured!

## Using the rdLogger Software

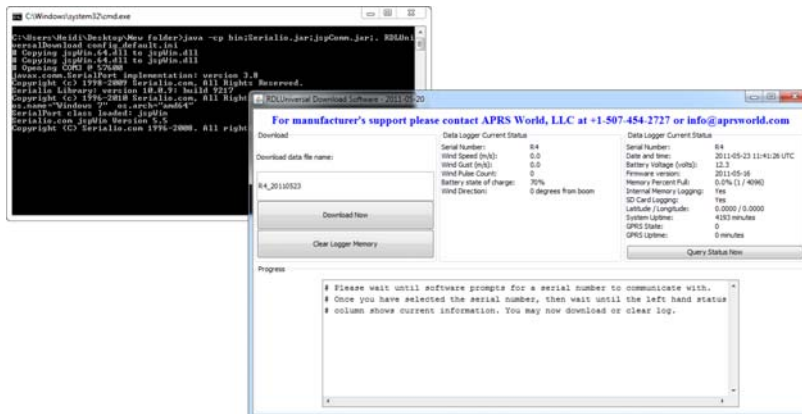
**Note:** To use the rdLogger software it requires the wireless modem be active on the crane mounted data logger.

1) Open the rdLogger software by clicking on “download.bat”.

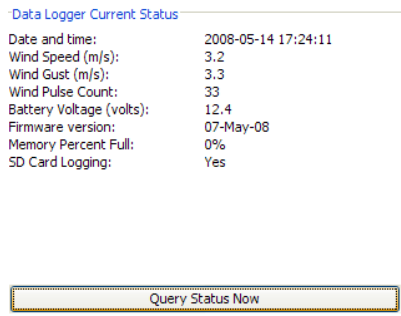


2) The software will start listening for active rdLogger units within wireless range. As soon as it detects a signal from an rdLogger unit, the software will ask if this is the unit you wish to communicate with. If the serial number shown is the correct unit, click “yes.” Otherwise, click “no” and the software will continue to scan for other units.

3) You will be presented with the main rdLogger screen. There will be a text window in the background.



4) Click on the “Query Status Now” button to test communications and to check the data logger status. After a brief delay the screen will show the status. **Important:** If the status does not show up, then the software is not communicating with the rdLogger unit.



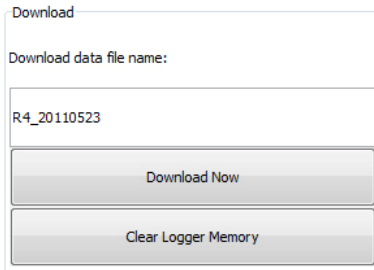
Information includes:

- Serial Number of rdLogger unit
- Current date and time as observed by the data logger
- Data logger battery voltage
- Firmware version (date) running on data logger
- Memory % full
- Status of internal memory logging
- Status of logging to SD card
- Latitude/Longitude (only for units equipped with a GPS device)
- System uptime
- GPRS state (only for units equipped with a cellular modem)
- GPRS uptime (only for units equipped with a cellular modem)

5) If status shows up then communications is working and you can use all other features of the software. If status does not show up then it is likely that the modem on the data logger is not currently on.

## Download Log File

The pane on the left side of the software is used for downloading the data stored in the data logger.



Download

Download data file name:

R4\_20110523

Download Now

Clear Logger Memory

1) In the text box you can enter a unique filename for your data. All of the data in the data logger is downloaded each time. The filename will default to the unit's serial number and the current date (i.e. "R8\_20110523"). The data files are saved to the folder containing the rdLogger software. **Note:** If the same file name is used twice, any additional data will be appended to the end of the existing file.

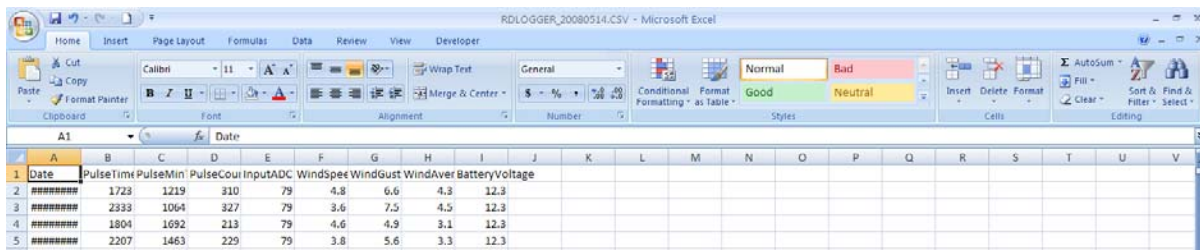
2) Press the "Download Now" button. There will be a delay (up to several minutes) while the data is transferred from the data logger to your computer. In the white text window you will see the status of the data download.

3) Once all of the data is transferred the file should automatically be opened if you have MS Excel or another spreadsheet program installed.

4) Data files are saved in the rdLogger folder. You are interested in the file that ends with ".CSV" and will typically have an Excel icon associated with it. If the file did not automatically open or you are referring to it later, then you can open the file by double clicking on it.



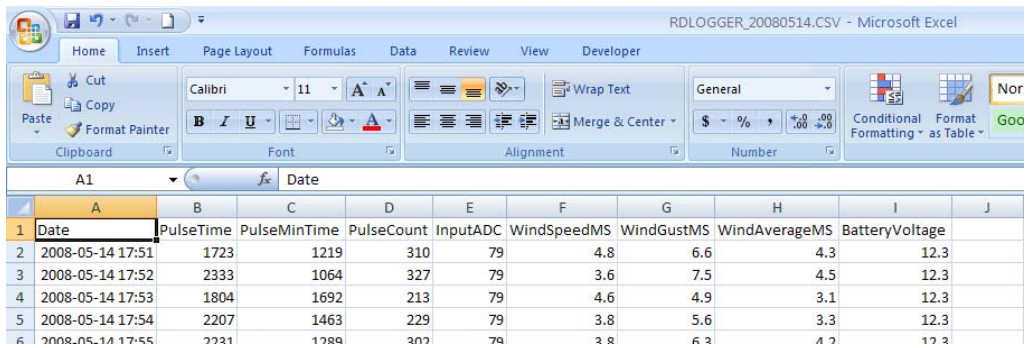
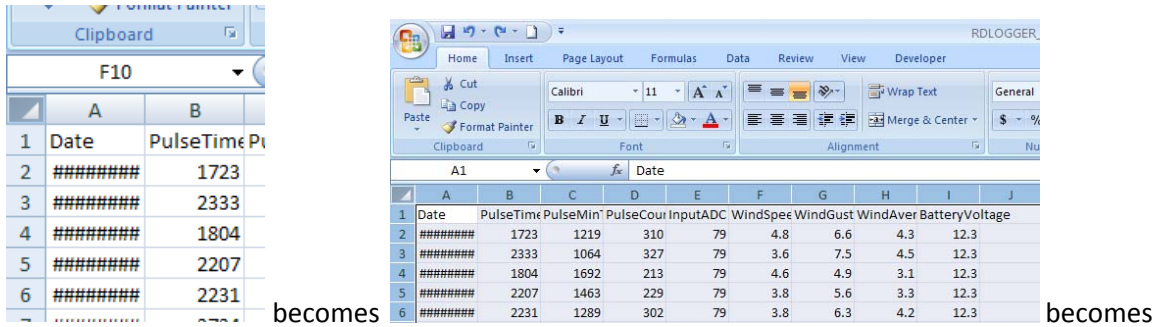
5) Once Excel is open you are free to process the data as fit. You will find column headings in the first row.



RDLOGGER\_20080514.CSV - Microsoft Excel

Date	PulseTime	PulseMin	PulseCount	InputADC	WindSpeed	WindGust	WindAver	BatteryVoltage
1723	1219	310	79	4.8	6.6	4.3	12.3	
2333	1004	327	79	3.6	7.5	4.5	12.3	
1804	1692	213	79	4.6	4.9	3.1	12.3	
2207	1463	229	79	3.8	5.6	3.3	12.3	

6) Usually the columns are too narrow to show the data correctly. In our screenshot above, you can see that the date is not displaying and the column headings are truncated. You can automatically resize the width of the columns by clicking once on the select all data button. This button is in corner between column A and row 1. After all the data is selected, double click on one of the column dividers. All columns should automatically resize to fit.



You are primarily interested in columns A through G.

- A) DATE & TIME
- B) SPEED INSTANT (MPH)
- C) GUST (MPH)
- D) SPEED AVERAGE (MPH)

Columns E through G show the same data in Meters per Second.

Column J shows the battery charge percentage. If this value is low or near 0%, then there may be an issue with the battery and/or charging system.

### *Clearing the Logger's Internal Memory*

**Warning:** Do not click this button until you have downloaded and backed up the internal memory. The logger's internal memory holds a maximum of 4 months' worth of data. As this memory fills up, download times will be longer. After downloading data from the logger, you can clear the logger's internal memory by clicking the "Clear Logger Memory" button. It may take several seconds to clear the memory. To verify if the internal memory has been cleared, click on the "Query Status Now" button and check the "Memory Percent Full" reading. This does not clear the data on the SD card, which can hold up to two years' worth of data.