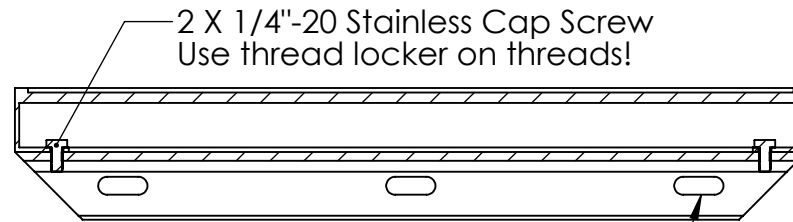
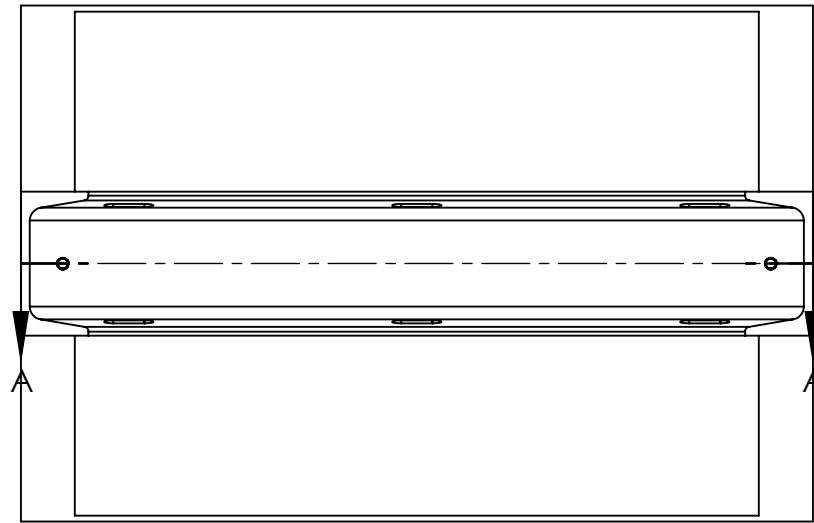


Solar Panel Mount



SECTION A-A
SCALE 1 : 4

Use 3 X 3"-4" hose clamps to
attach to 2.5" or 3" crane pipe

Required parts:

- 10 watt solar panel
- Mounting rail
- 2 x 1/4"-20 cap screw, stainless steel

Required tools:

- 7/16" end wrench
- 5/16" nut driver OR flat blade screwdriver
- Loctite thread locker

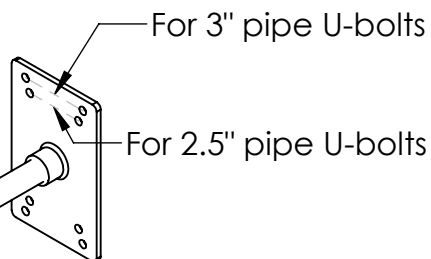
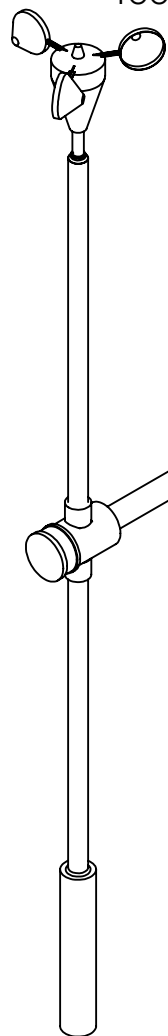
Anemometer Pivoting Mount

Parts required:

Mounting plate
Pivot shaft / bearing assembly
Counterweight
Anemometer shaft

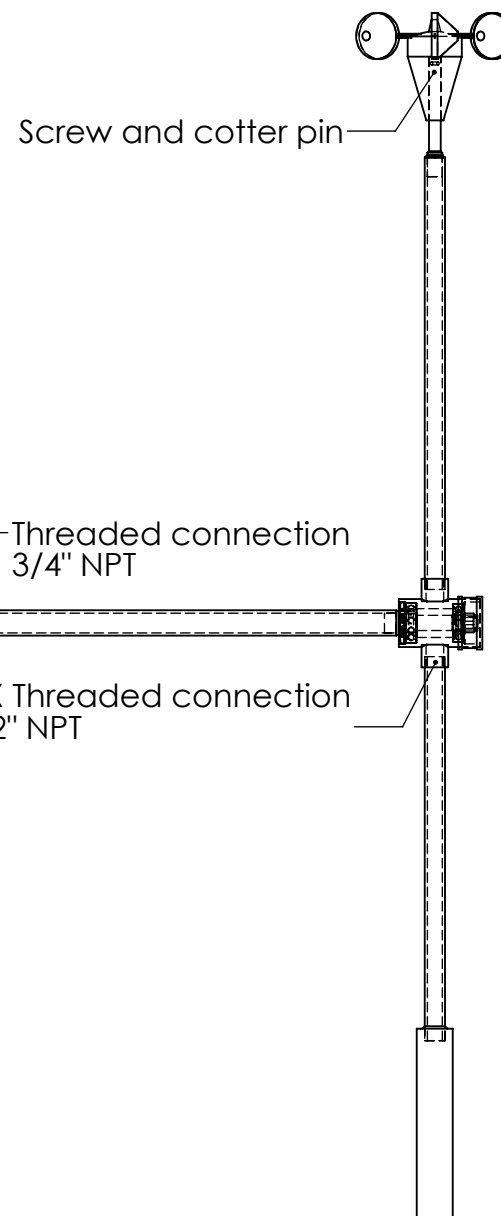
Tools required:

9/16" socket or wrench
Pipe wrench
Phillips screwdriver
Pliers
Thread locker
Electrical tape



Installation / assembly:

- 1) Use appropriate size u-bolts to attach mounting plate to crane 2.5" or 3" pipe. Be sure to use threaded locker on the u-bolts and adequately tighten the nuts.
- 2) Thread pivot shaft / bearing assembly in to female thread on mounting plate. Use a pipe wrench to tighten.
- 3) Thread counterweight in to bearing assembly. Use a pipe wrench to tighten.
- 4) Thread anemometer shaft in to bearing assembly. Use a pipe wrench to tighten.
- 5) Install anemometer with set screw and cotter pin. Secure flex cable to pipes with electrical tape. Allow a loop in the cable to account for extra length required during rotation.



Anemometer Cable Connections

Wire "1": Signal

Yellow/Green wire (ground): –

Wire "2": +

