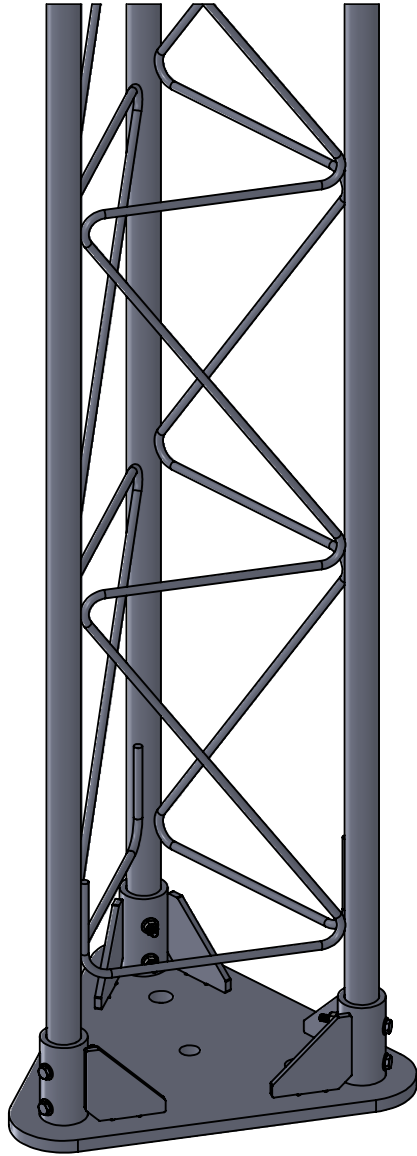


ROHN 25G TOWER BASE
OVERVIEW



- HEAVY DUTY TOWER BASE**
- THREE 7/8" HOLES FOR 3/4" ANCHORS
 - 3/4" CENTER HOLE FOR ALIGNMENT PIN
 - ALL-WELDED CONSTRUCTION
 - WEIGHT ~ 25 LBS

